

# ATMO BYTE

---

**Roland Integra - Edition**

---

Manual 2020

General description.....	3
Installation of the software .....	4
Licensing of the software .....	6
First steps .....	7
Keyboard settings .....	8
Versions of the software.....	9
DEMO Version .....	10
FULL Version .....	11
menu bar.....	12
Title.....	13
Title search .....	14
search for title A-Z.....	16
search form tilt-part .....	17
search for keywords .....	18
Title new.....	20
Title edit .....	22
Title delete .....	24
Title copy.....	25
PDF synchron .....	26
SETs .....	28
Titlelist .....	30
Titlelist new .....	31
Titlelist delete .....	33
Titlelist change .....	34
Sheet music in PDF format.....	35
Scan in scores .....	36
Show scores .....	38
Video .....	40
PRESETs .....	41
PRESET copy.....	44
Service settings .....	45
MIDI settings.....	46
program update .....	47
equipment .....	48
footswitch .....	49
bluetooth .....	50
USB .....	52
system requirements .....	53
Tips und Tricks .....	54
Use of internal help .....	55
right mousekey .....	56
remote maintenance .....	57
Enter comments in sheet music.....	58

**The idea:**

**Stop up music books or folders to the show.**

**All notes in the computer, and when calling up and displaying a sheet music file it is also best to automatically set the Keyboard correctly to the title.**

**ATMObyte Böhm classic-Edition** is a complex software, with an unlimited number of titles and the associated notes or texts in [PDF format](#). The titles can be distributed to any number of playlists. Titles can be assigned to 12 different [set's](#) and the desired set can be activated with one click.

For each title, a sound file in mp3 format can be deposited and played as required. For each title, a video file (mp4) can be stored and played on a second monitor or projector as needed.

With the scanning function integrated in **ATMObyte Integra-Edition**, existing paper notes can be scanned directly.

The correct assignment and saving in [PDF format](#) are automatic.

Of course, already existing PDF files can be used.

Calling a title not only displays the corresponding notes, but the title-related registration of the connected **Keyboard** is called automatically.

The software runs under all [Windows systems](#).

Mac systems require the installation of VMware Fusion beforehand.

If a tablet computer is used, the software automatically adapts to the position of the tablet.

When used vertically (portrait), the display automatically switches to 1-sided display, so that the sheet of music is displayed on the entire display.

**ATMObyte Integra-Edition** but only start when the desired position of the display is done.

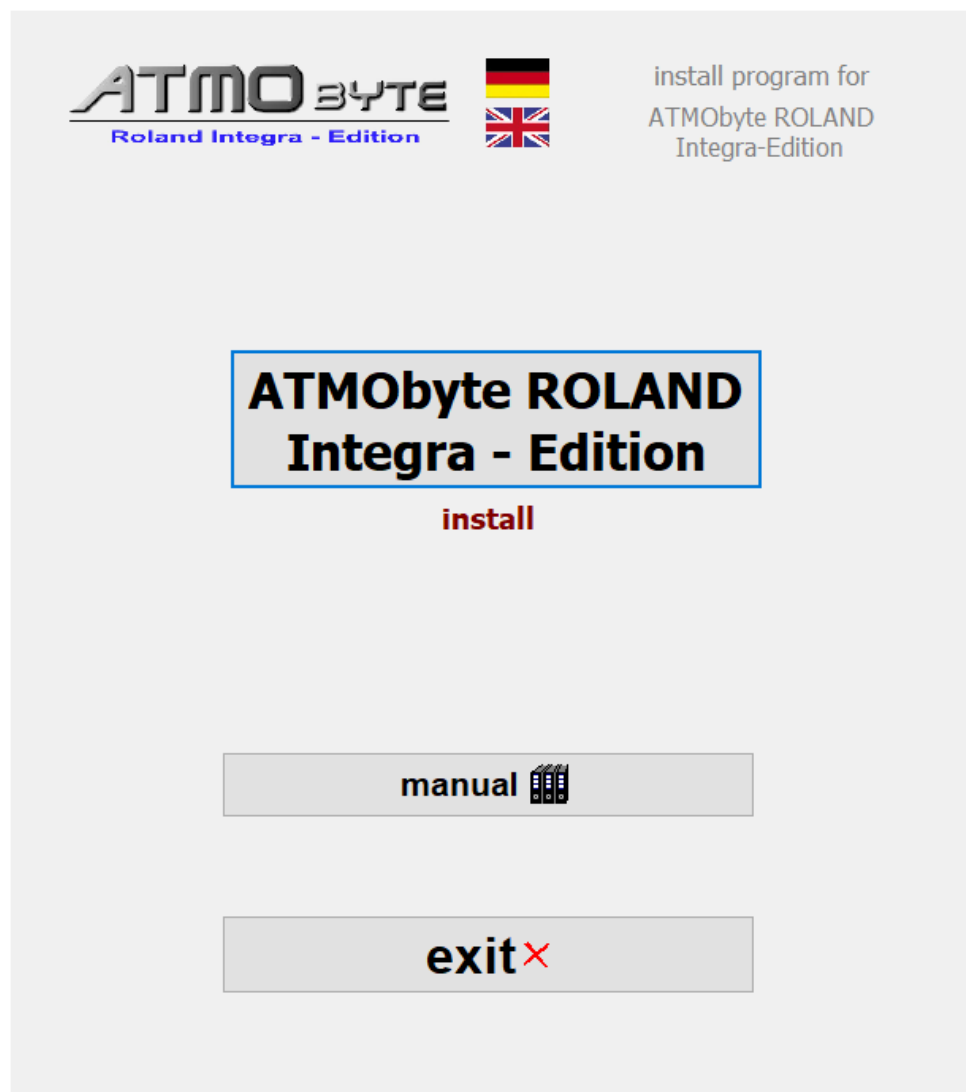
### 1.1 Installation from CD

After inserting the CD into the computer, the installation program starts automatically. If this does not happen please start the file [InstallBCE.exe](#) on the CD with a double-click.

### 1.2 Installation of the download version

In the download version, the program is automatically installed.

The following menu options are now available:



The **ATMObyte Integra-Edition** installation routine installs the program on your computer. The installation directory can be chosen freely and is preset to **C: \**.

Installation is not possible in the directories **C: \ Programs** and **C: \ Programs (x86)**. These directories are systemically important. An installation would only require a change in the registry be possible and that should be avoided.

Only the folder **ATMObyte Integra-Edition** with all files belonging to the program will be copied to the hard disk and no changes are made to the system or the REGISTRY.

During the installation this message can come from **Windows Defender**,



but that has to do with Microsoft and their caution and not with problems or dangers of the software itself.

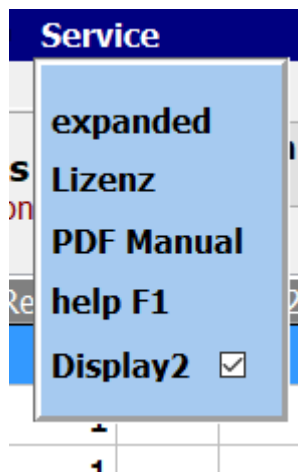
Of course, Windows knows neither the program nor the manufacturer, so security is important first.

You also get this message when installing many other programs.

The installation is carried out by clicking on **More information** and then on **Install anyway**.

When first started, the software starts as a [DEMO version](#).  
To license the software, from the [DEMO version](#) to make  
a [full version](#), the entry of a license code is necessary.

The entry is made in the menu item SERVICE under license.

A screenshot of a license entry dialog box. The dialog has a light blue background and a red 'X' in the top right corner. It contains the following elements: the text 'HW-CODE' in bold, underlined black font; the value '198339' in bold blue font; a horizontal separator line; the text 'LIZENZ' in bold, underlined black font; and a text input field containing the license code 'SMASKHWQ' in blue font.

For the creation of the license code the serial number is always necessary.

## First steps

After the software is installed, it can be started.

At the first call the software starts as DEMO version.  
In the DEMO version the software can be extensively tested.

The only limitations are that the notes are overwritten with **DEMO**.

All other functions, including the keyboard control, are fully usable.

If a [license code](#) is available, the software can be registered with this code and is a [full version](#).

If you want to call up the registration of the keyboard for the title you are calling,  
so the keyboard must first be set once to the correct [MIDI channel](#).

This channel is specified by **ATMObYTE Integra-Edition** and can be changed under [Service-> Settings](#).  
When installing **ATMObYTE Integra-Edition** for the first time, this is channel 16.

### *Organ settings*

To use the registration call of the connected organ  
just change the [MIDI setting](#) of the organ as follows:

If the MIDI channel 16 is used, the following settings apply to the organ:  
MIDI IN    Channel    16



### *DEMO version*

At the first call the software starts as DEMO version.  
In the DEMO version the software can be extensively tested.

The only limitations are that the notes are overwritten with **DEMO**.

All functions can be used without restrictions.

Now these registrations can be addressed by the program during the title selection.

### *FULL version*

In the full version, is after entering a correct license code,  
all functions listed in the description are executable.  
The coverage of the notes with **DEMO** in the DEMO version is no longer visible.

## menu bar

The individual functions of **ATMObyte Integra-Edition** can be called up via the buttons in the menu bar.



With **program** the **Roland Integra** can be stopped

With **title** a title can be used to create a title  
a title will be deleted  
a title will be copied  
a title will be rename

With **Titlelist** a new titlelist can be create  
a titlelist will be deleted  
a titlellsit will be renam

**Service** switches to the settings area of the program  
and important program properties can be changed.

With **PRESETs** the 20 available PRESETs are called.  
These can be edited and / or played.

**Keyboard on / off** displays or hides an on-screen keyboard.

With the **country flags** the language of the program can be changed.

The switches ☒ **Software Control**  
affect the control behavior of **ATMObyte Integra-Edition**.

If the switch ☒ **Software Control** is deactivated, the registration will be made for a title call  
the organ does not change. Only the notes are displayed. This allows  
playing a variety of titles with the same registration of the organ.

## *Title*

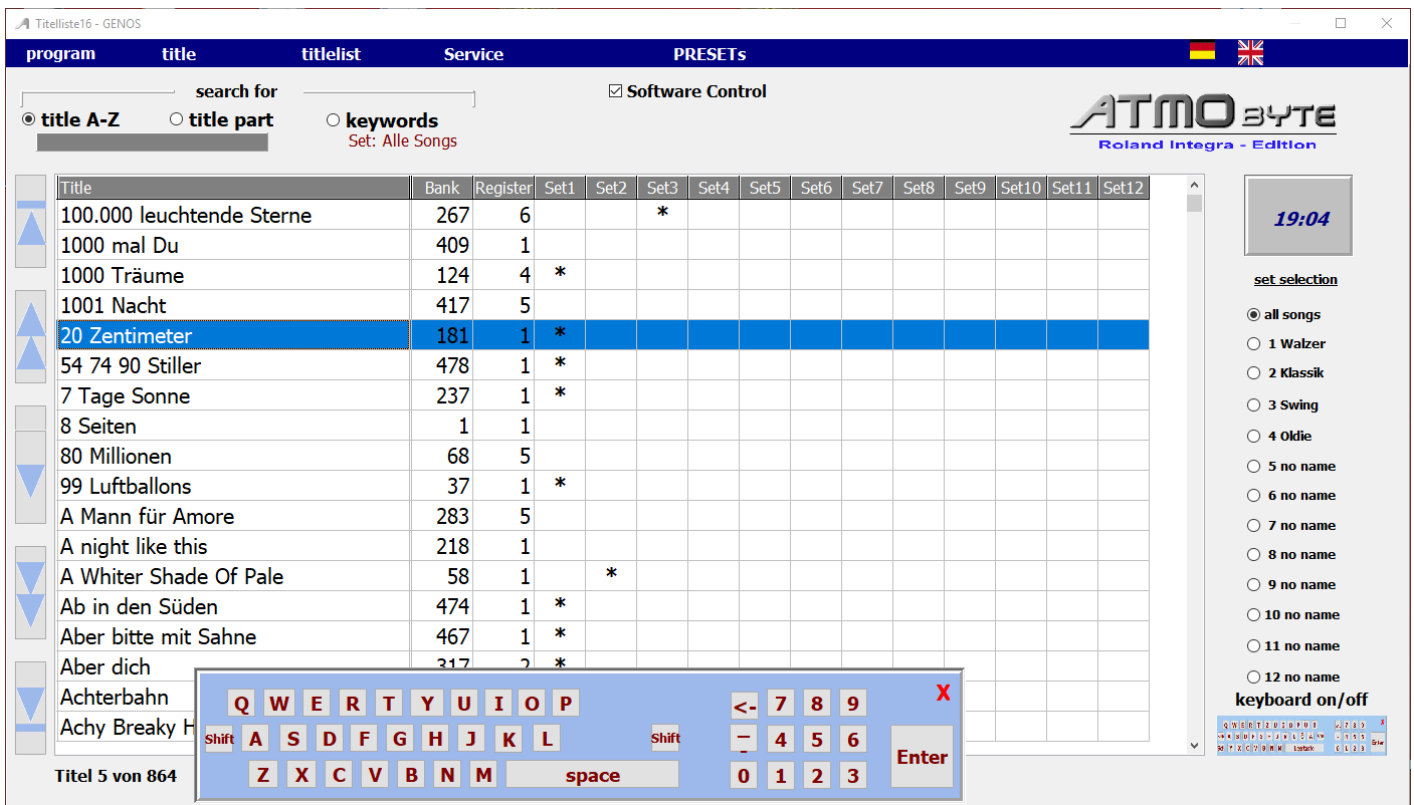
A title is an entry in one of any number of [titlelists](#).  
The number of titles in a [titlelist](#) is unlimited.

A title is called by its name.  
This name also assigns the notes and any existing mp3 files or video files to the [title](#).

These files must be named exactly as the title.  
If the [title](#) is Yesterday, the corresponding sheet PDF is Yesterday.pdf.  
The mp3 file Yesterday.mp3 and the video file Yesterday.mp4.

If **ATMObyte Integra-Edition** internal [scanning](#) program is used to scan the scores,  
this will automatically generate the name of the [PDF file](#) correctly  
and the sheet music is stored in the directory. \ PDF \ Display1.

The selection of a title can be done in different ways.



1

### Mauscrollwheel

The scroll wheel of the mouse scrolls through the title list.

2

### arrow keys

Use the arrow keys to the left of the title list to maneuver.

3

### OnScreenKeyboardr

The title is selected using the screen keyboard below the title list. The on-screen keyboard can be displayed and hidden as desired.

This is done by means of the keyboard on / off button.





All functions can be performed by mouse or with a touchmonitor by finger.

Searching for a [title](#) using the on-screen keyboard or the PC keyboard can be done after the [title](#), is alphabetically or it can also be searched for a letter sequence in the [title](#) name. To do so, select Search for below Title bar or Title content below the menu bar.

search for

☒ **title A-Z**

☐ **title part**

☐ **keywords**  
Set: all songs

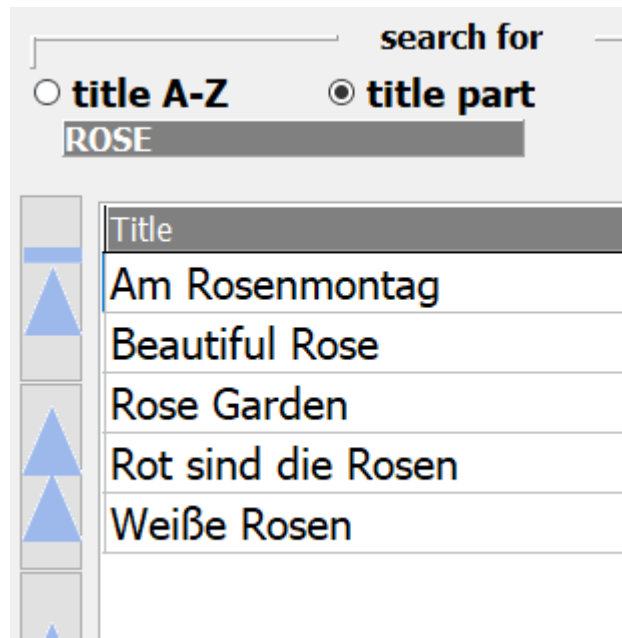
If the [title](#) search is set to the beginning of the title, the first title that starts with **B** is selected by entering the letter **B**.

If one enters now the letter **A** one ends up with the first title with the initial letters **BA**, e.g. Baker Street.

If you enter an **R** and there is no title with the initial letters **BAR** in the title list, the first title is immediately marked with the initial letter **R**.

During the title search for content, the entered letter sequence does not have to be at the beginning of the [title](#), but may be somewhere in the title name.

All titles are then displayed in which the entered letter sequence exists.  
If you enter e.g. If you enter the word ROSE, all titles appear with this letter sequence.



The screenshot shows a search interface with a header bar. On the right, it says "search for". Below this, there are two radio buttons: "title A-Z" (unselected) and "title part" (selected). A search input field contains the text "ROSE". Below the search bar, there is a list of titles. The first title is "Title", which is highlighted. The other titles are "Am Rosenmontag", "Beautiful Rose", "Rose Garden", "Rot sind die Rosen", and "Weiße Rosen". To the left of the list, there are several blue upward-pointing triangles, indicating that the list is scrollable.

Title
Am Rosenmontag
Beautiful Rose
Rose Garden
Rot sind die Rosen
Weiße Rosen

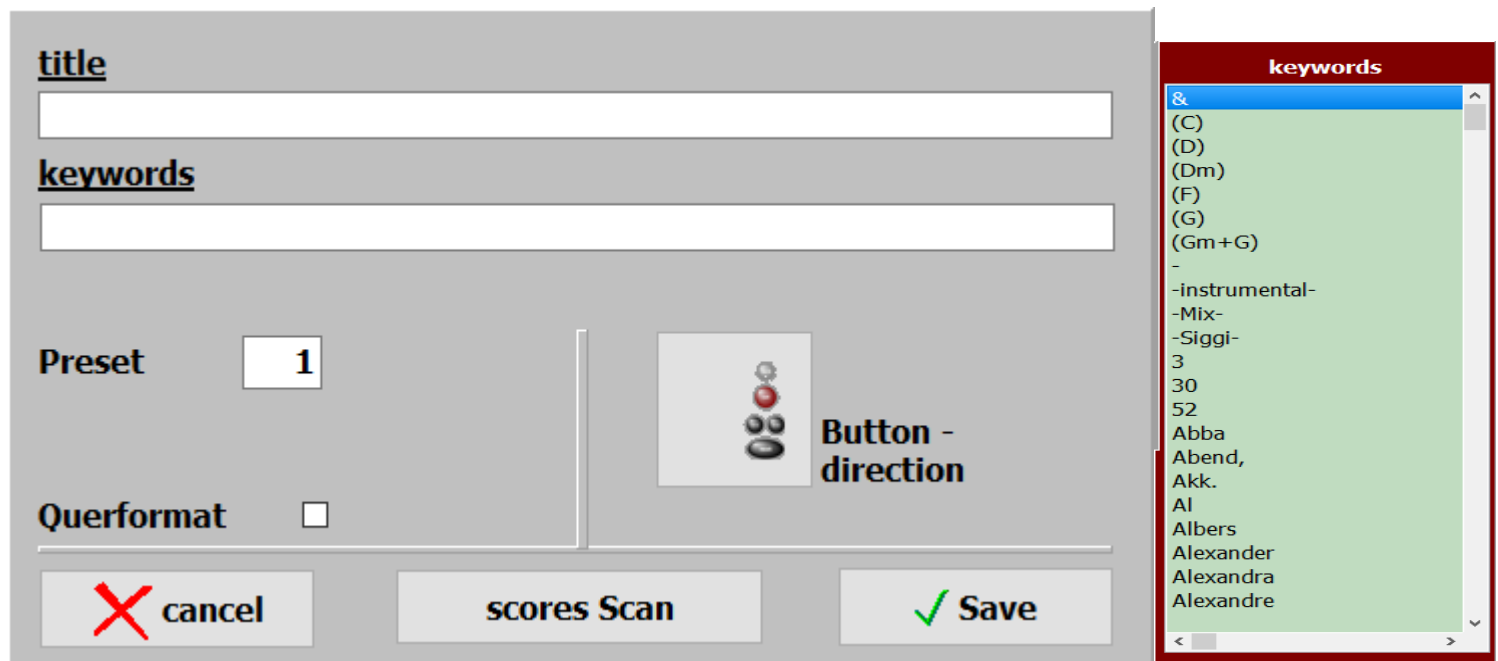
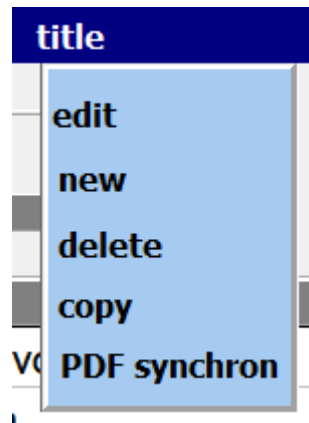
When searching for keywords, the middle touch panel displays all the keywords used in the program.

Title	Bank	Register	Set1	Set2	keywords
!Volker	0	0			Jackl
's Boarische Bier	87	6			Jazz
16" und 8" Chor, minim. verstimmt	81	11			Club
16"er mit Cassotto	81	6			Reinhold
A Rindvieh	87	5	X		Frankreich
A Rindvieh mag koa Bier	87	4			Stimmung
A weißes Blatt 'I Papier -Relax-	0	0			Oldie
A Whiter Shade Of Pale	5	7	X		Grenzland
Abendglocken	69	14			Bank
Abends in der Taverne	85	10	X		Unterhaltung
Aber bitte mit Sahne	17	11	X		Roider
Aber böhmisch muss es sein	72	10			
Aber der Novak lässt mich nicht verkomme	1	1			
Aber Dich gibt 's nur einmal für mich	1	13	X		
Aber heidschi, bumbeidschi	55	5	X		
Abschied ist ein scharfes Schwert	6	2	X		
Abschied ist ein scharfes Schwert 2	6	2	X		
Adalita -Ikarus Showorchester-	72	6			

If you now use the keyword Frankreich, the title display shows all [titles](#) to which this keyword has been assigned.

Title	Bank	Register	Set1	Set2	keywords
!Volker	0	0			Jackl
Akkordeon, Akkordeon (Am) -Alexandra-	10	6			Jazz
Alles fürs Vaterland (F) -Musettewalzer-	7	3			Club
Alt & Musette	54	10			Reinhold
Cestsibon (B++)	39	10			Frankreich
Chanson d'Amour (F)	8	6			Stimmung
Das hab ich in Paris gelernt (C ) -Chris	36	12			Oldie
Ganz Paris träumt von der Liebe	7	1			Grenzland
Hinter den Kulissen von Paris -Alois-	86	10			Bank
Klari & Musette	54	11			Unterhaltung
Lied von Paris (G)	50	10			Roider
Mademoiselle de Paris (Dm+D)	50	11			
Mademoiselle de Paris (F)	52	7			
Mademoiselle de Paris (Gm)	66	2			
Melodie d'Amour -Calypso Stil-	87	1			
Moulin Rouge	46	7			
Musette (Cm)	37	12			
Musette + Saxophon	21	2			

With title-> new in the menu bar a title is added to the current title list,  
or by clicking on the [Insert key](#).  
The input mask then opens.



The most important input is the title name. Without this input can not be saved.

For each title keywords can be assigned.  
After this, the title can then be searched.

The keywords already used in the program are listed in the list of tags  
and can be accepted with a [double-click](#).

If a new keyword is entered, it is automatically added to the keyword list.  
Keywords can be the artist, the composer, the genre, the key, the epoch, and so on.

The entries for registration have 2 values.  
1. the registration bank

2. the registration memory to be started with.

The [Scan Scores](#) button allows scores to be scanned directly from the program and the title.

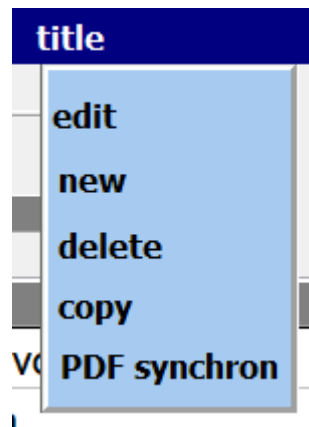
This feature is detailed in [Scanning Scores](#).

Title> Edit in the menu bar opens the selected title for editing.

It then opens the same mask as when creating a new title.

There are only the title name and all entered parameters of the title available.

The editing of a title can also be done by a click with the right mouse button on the title name.



The most important input is the title name.

Without this input can not be saved.

For each title keywords can be assigned.

After this, the title can then be searched.

The keywords already used in the program are listed in the list of tags  
and can be accepted with a *double-click*.

If a new keyword is entered, it is automatically added to the keyword list.

Keywords can be the artist, the composer, the genre, the key, the epoch, and so on.

The entries for registration are described in Registration.

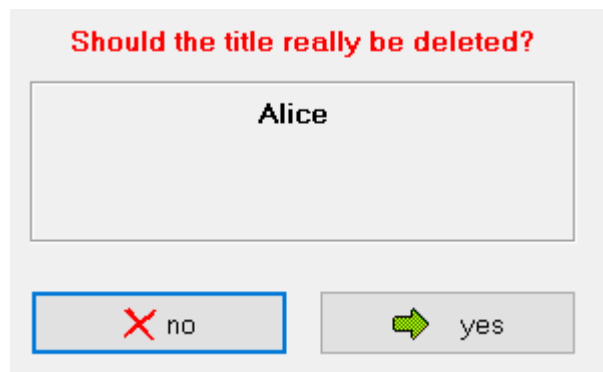
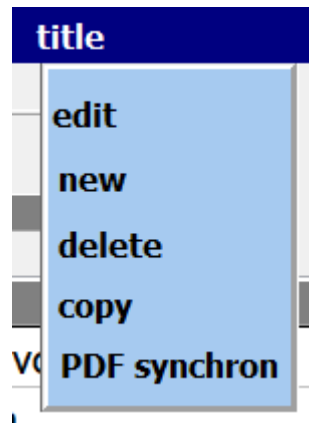
The [Scan Scores](#) button allows scores to be [scanned](#) directly from the program and the [title](#).

This feature is detailed in [Scanning Scores](#).

With Title-> delete in the menu bar a title can be deleted.

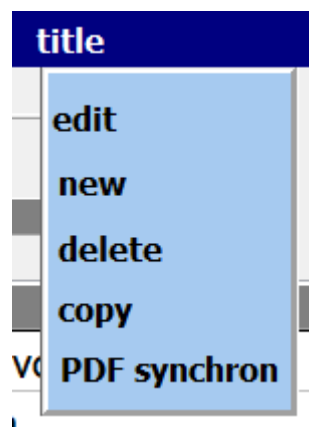
Deleting can also be done by clicking on the *Del* key.

When deleting, only the entry in the title list with all settings is removed.



After confirming the delete request, the title will be permanently removed from the title list.

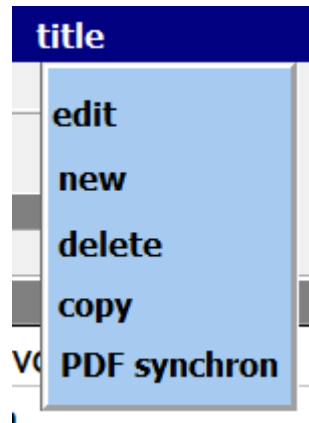
The **Title-> Copy** function in the menu bar allows you to copy a title.



The title then appears with the same name and the extension **COPY**.

A women in Love	1	*	*		
Alexis	139	*			
Alhambra	262	*			
Alice	114	*			*
Alice Copy	114	*			*
All About That Bass	140	*	*		
All By Myself	169	*			
All I Want For Christmas	115	*			

## PDF synchron



This feature finds the PDF files in the **PDF\Display1** directory, that are not present in the current playlist.

If you want to create a title from a displayed PDF, just click on the PDF and in the current title list a title with the name of the PDF is created.

Via **print list** a list with all PDF files in the directory **PDF\Display1** is printed out. The PDF's for which a title exists in the current playlist are marked with an **X**.

**PDF-files not in titellist (495)**

Albany

Anita

B6\_13-Ungarischer Tanz Nr. 6-Brahms

B6\_14-The Entertainer

B6\_15-G. Donizetti-Bach

B6\_16-G. Donizetti-Bach

B6\_17-Scarborough Fair

B6\_18-In mir klingt ein Lied

B6\_19-See you later, Alligator

B6\_20-Musik liegt in der Luft

B6\_21-Humoreske-Dvorak

B6\_22-Autumn in Romania

B6\_23-Csardas

B6\_24-Sambita y Cantabile

Banks of Ohio

Banks of the Ohio

Beer Beer Beer

Bella Ciao

Blanket on the Ground

Blanket on the Ground

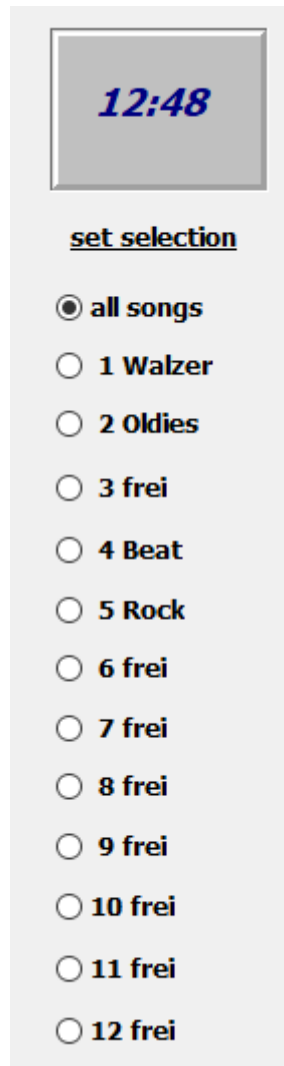
&lt;

&gt;

Print List

✕ Cancel

SETs are the selections for the playlist, which are located on the right edge of the screen.  
The title list can be limited by the **SETs** to certain selection ranges



The image shows a vertical menu interface. At the top, there is a grey rectangular box containing the text **12:48** in a blue, italicized font. Below this box, the text **set selection** is displayed. Underneath, there is a list of radio button options. The first option, **all songs**, is selected, indicated by a filled black circle. The remaining options are **1 Walzer**, **2 Oldies**, **3 frei**, **4 Beat**, **5 Rock**, **6 frei**, **7 frei**, **8 frei**, **9 frei**, **10 frei**, **11 frei**, and **12 frei**, each preceded by an empty white circle.

To assign a title to a **SET**, a star is generated for this title in the matrix for the relevant **SET** with a click.  
A further click on this field deletes the marking

Titel	Register	Set1	Set2	Set3	Set4	Set5	Set6	Set7	Set8	Set9	Set10	Set11	Set12
!aaaa	1												
!Test 3 Seiten	1	*											
54 74 90 Stiller	478	*		*									
7 Tage Sonne	237	*		*			*						
8 Seiten	1	*	*				*						
A women in Love	1	*	*				*						
Alexis	139	*					*						
Alhambra	262	*											
Alice	114	*			*	*							
Alice Kopie	114	*			*	*							
All About That Bass	140	*	*										
All By Myself	169	*											
All I Want For Christmas	115	*											
All my loving	115	*							*				
All shook up	120	*				*							
All you need is love	197	*											
Alles im Griff	457	*							*				
Aloha Hea	472	*											

If you now click on a **SET** on the right side of the screen, only the titles appear in the [title list](#), which have been assigned to the **SET**.

The SET selection can also be made by clicking on the corresponding column header.

Set1	Set2	Set3	Set4	Set5	Set6	Set7	Set8	Set9	Set10	Set11	Set12
*											
*		*									
*		*			*						
*	*				*						

The names for the **SETs** can be changed by clicking with the right mouse button on the **SET** name.

If no name is entered for a **SET**, the name is automatically entered as the name.

### *Tilelist*

A title list can contain an unlimited number of [titles](#).

Any number of titlelists can be created.

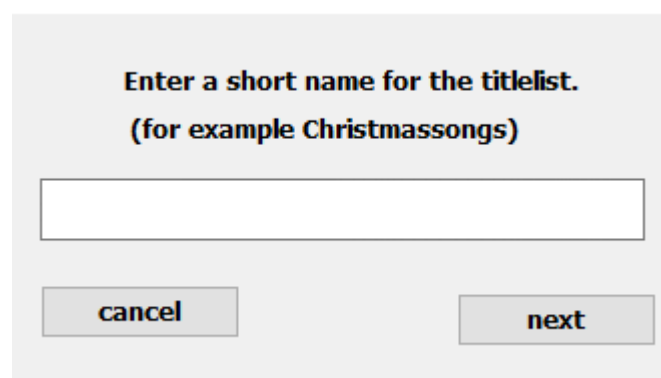
At the first program start, the playlists are **Titelliste00-DEMO** set with 20 titles as DEMO playlists.

If title lists are created, they start with the number 21.

Creating a new [titlelist](#) is done in the menu bar *with titlelist-new*.



An input window opens and the name of the new list can be assigned.

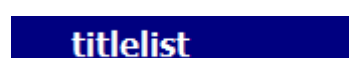
A screenshot of a dialog box with a light gray background. At the top, it says 'Enter a short name for the titlelist. (for example Christmassongs)'. Below this text is a white rectangular input field. At the bottom, there are two buttons: 'cancel' on the left and 'next' on the right.

The self-created titlelists start with the number 20 and are numbered consecutively, e.g. Titlelliste20 Christmas.

If the new title list is successfully created, this is confirmed.



Via [titlelist-> Rename](#) in the menu bar, the name of the titlelist can also be changed later.



change  
new  
delete  
rename

Kurzbezeichnung von: Titelliste05

**Tyros5**

Neue Kurzbezeichnung:

Tyros5

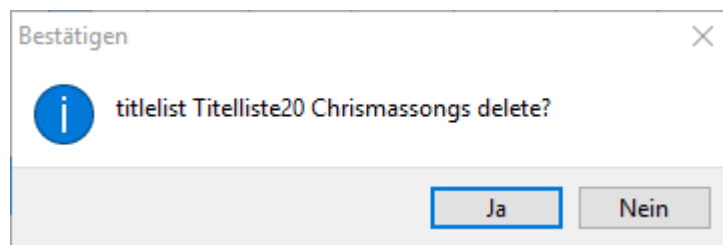
abbrechen

übernehmen

Deleting a title list is done with *titlelist-> delete* in the menu bar.



By clicking on the corresponding titlelist and confirming the deletion query, the selected titlelist is deleted.

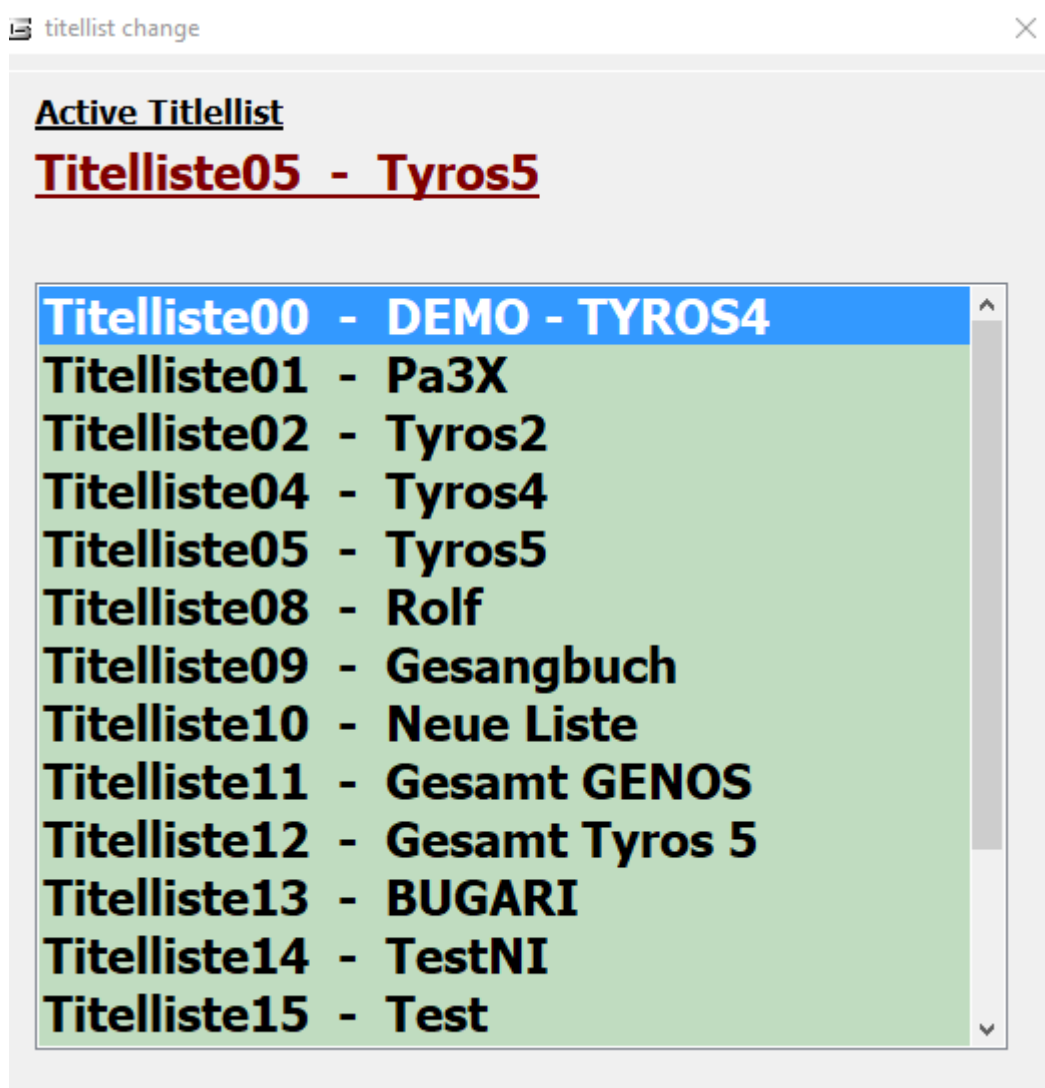


The active titl list and the DEMO Titelliste00 can not be deleted !!!

The change between the existing title lists is done by means of *title list-> change* in the menu bar.



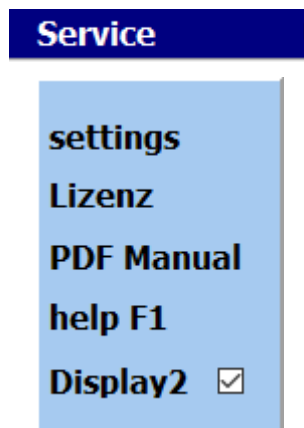
In the opening selection window all available titlelists are listed.  
Click on the desired titlelist to activate it immediately.



Each title includes a score PDF.  
This is located in the folder **PDF\Display1** or **PDF\Display2**.

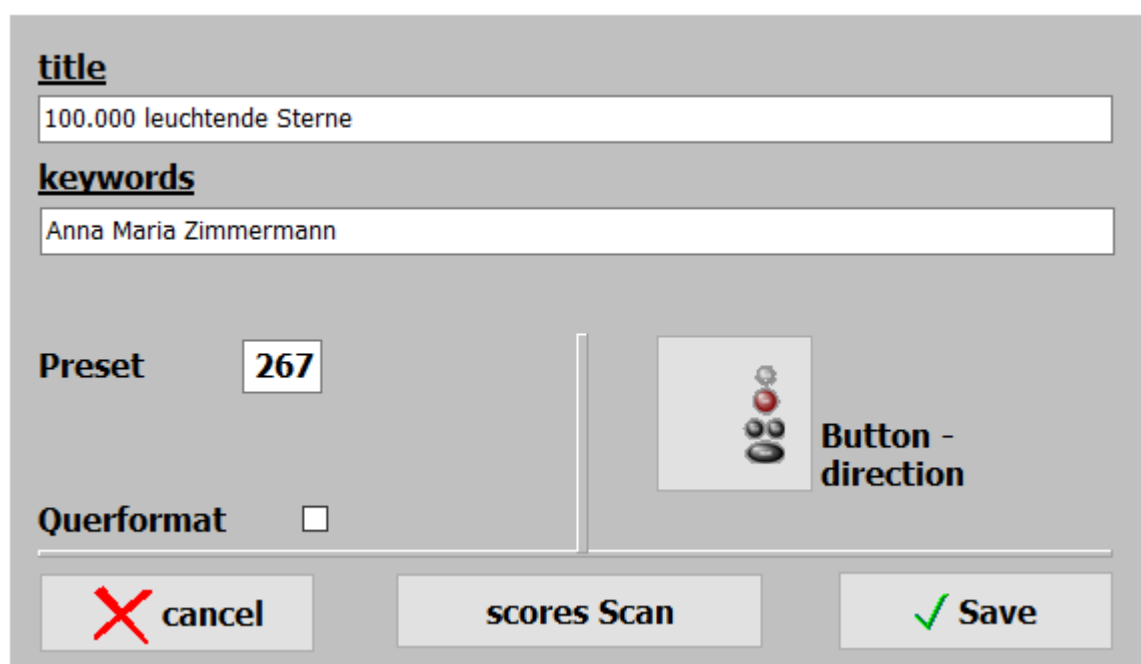
If notes are already available in PDF format, they can be used.  
They just need to be copied to the directory **PDF\Display1** or **PDF\Display2**.

By default, the notes from the **PDF\Display1** directory are used.  
However, if activated under **SERVICE Display2**, the notes from the **PDF\Display2** directory are used.  
In this way the titles can be assigned different note images.



The PDF file must match the title name exactly,  
So for the *title Red Roses*, the PDF file *Red Roses.pdf* must be called.  
If printed notes are available for the title, they can be scanned in via the integrated [scan function](#).  
To do this, a scanner must be connected to the PC via USB.

If printed notes are available for the title, they can be scanned in via the integrated scan function.  
To do this, a scanner must be connected to the PC via USB.





**title**  
100.000 leuchtende Sterne

**keywords**  
Anna Maria Zimmermann

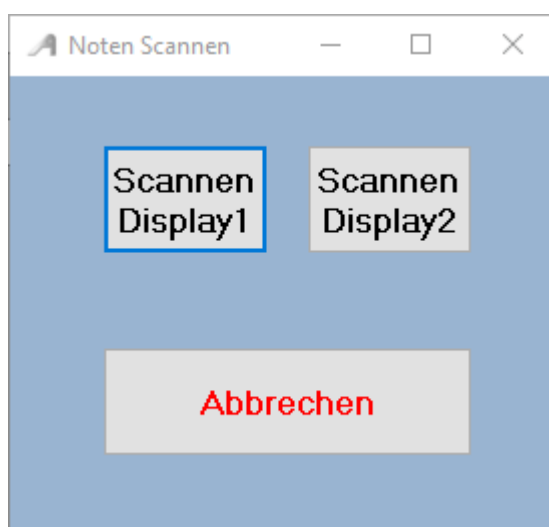
**Preset** 267

**Querformat** ☐

**Button - direction**

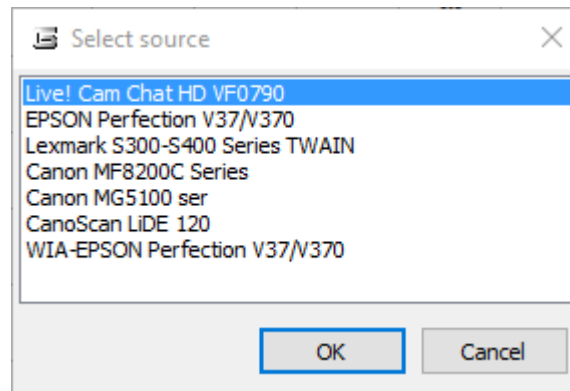
 **cancel** **scores Scan**  **Save**

The next window determines whether the scanned notes  
stored in **PDF/Display1** or in **PDF/Display2** ..



Click on **Scan Display1** or on **Scan Display2** to start scanning.

The optimal setting of the scanner must be made in the scan dialog and depends on the scanner.  
If the scanner shows 2 scanner drivers, please use the driver that starts with WIA.



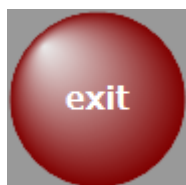
After the scanning process, the notes are automatically stored in the correct folder and can be immediately called up and displayed with the title.

There are no further entries like name of the [PDF file](#) or number of pages of notes necessary for the [title](#), since this is done automatically by the program.

By clicking on the title name or pressing the **ENTER** key the sheet music for the title is displayed.



By clicking on the title name or pressing the **ENTER** key  
In this case, it is a title with several Notidenitenamae.



With you go back to the title selection.

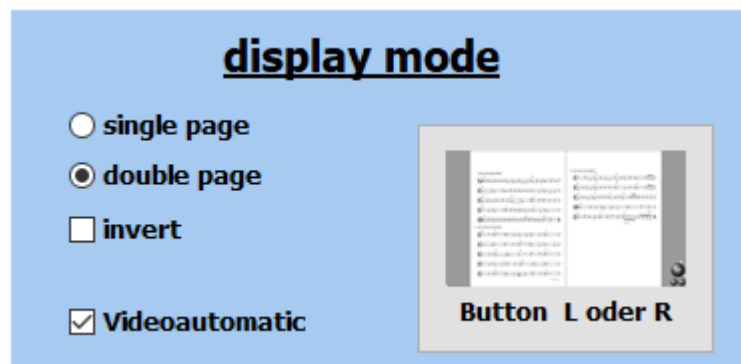
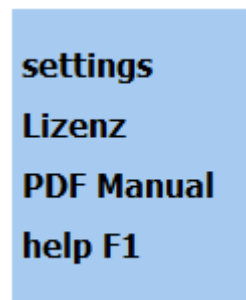
If the PDF file has multiple pages and scrolling is necessary,  
the required buttons for turning pages are visible.

Turning pages can also be done with a [footswitch](#) or with a fingerwash (touch screen).

If an mp3 file is available, it can be started via the [mp3 button](#).  
This button is only visible if an mp3 file belonging to the title exists.



Whether the control button should appear to the left or right of the notes, can be set under **SERVICE-> Settings** by clicking on the corresponding switch.



As a rule, two-page sheet music always displays 2 pages in parallel. In principle, a 1-sided display is desired, e.g. with small monitors, this can also be set under [SERVICE settings](#).

The note display can also be inverted.

The notes then appear in white on a black background.

This option should be applied to the display in case of strong light.

## Video

For each [title](#) a video can be deposited.  
The videos are always in the directory **VIDEO**.

If there is a video for a [title](#), it will do so in the menu bar  
with **video** displayed.

Click on this button to test the video playback.

The supported formats is: mp4.

If you want to start the video with the title call, then **Service-> Settings**  
to put a hook on **video-automatic**.

Is a 2nd screen or projector connected to the computer,  
so the video is played on this.

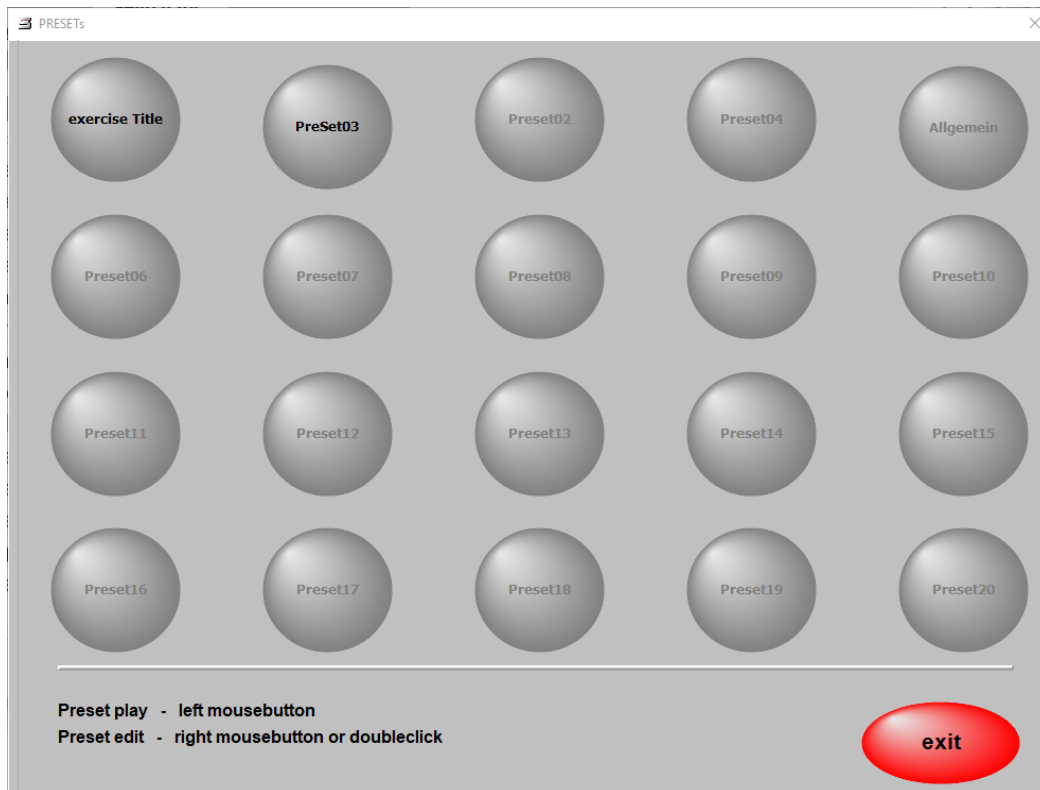
If a video is not played, that's because of the missing codec for this format.  
The missing codecs can be installed by looking in the **VideoCodec directory** of the program  
Run the file **STANDARD\_Codecs\_v651.exe** and then restart the PC.

You can access the PRESETs via **PRESETs** in the menu bar.

Up to 20 presets can be created.

If a PRESET is provided with [titles](#), the label of the corresponding button is black.

For empty PRESETs the label is gray.

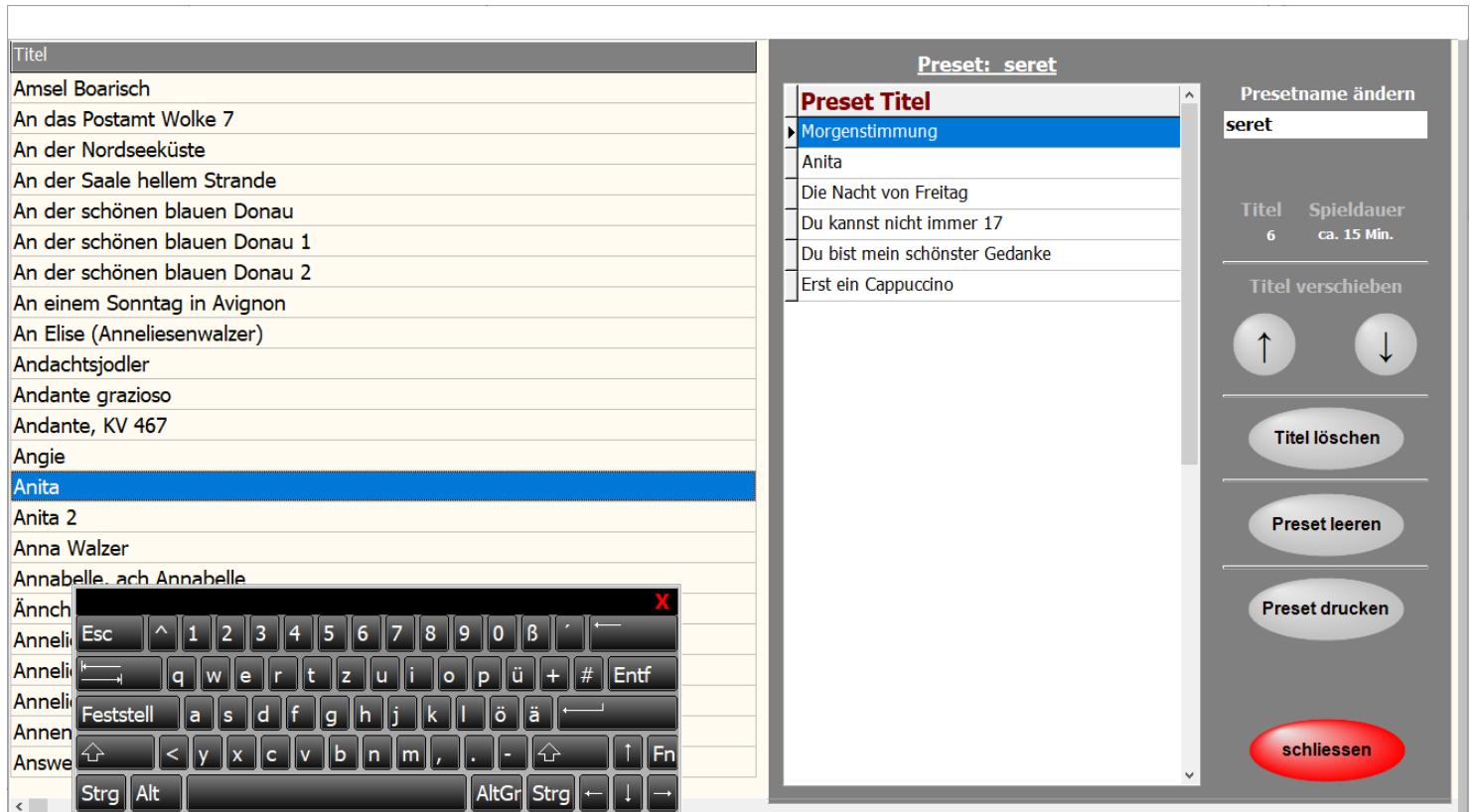


In a PRESET any number of [titel](#) can be stored in any order.

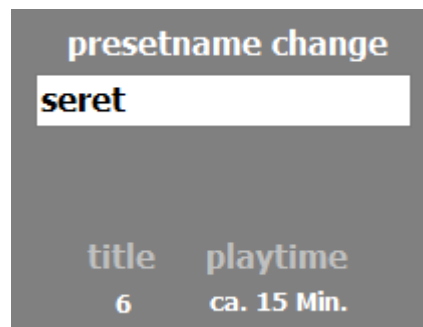
The order can be changed at any time, as well as the content of a PRESET.

To edit a PRESET, right-click on the corresponding preset  
or select the desired preset with a double-click for editing.

Now the PRESET is opened for editing and on the left side all [titles](#) of the active [titlelist](#) are displayed.



Double-clicking on a [title](#) in the [titlelist](#) will copy it to the PRESET.  
 It is inserted under the blue marked [title](#) in the PRESET.  
 Its position can be changed arbitrarily with the arrow keys.  
 The PRESET can be given a name.



The number of tracks contained in the PRESET and the approximate playing time of the entire PRESET are also displayed.



Close will save the PRESET.

To start a PRESET, just click on the corresponding button.  
 Now the first [title](#) of the PRESET is called up and the notes are displayed.

# Potp. 001 Schön ist die Jugend

Tyros 309  
Intro I

Schön ist die Jugend



R2 Du, du liegst mir im Herzen



R5 Jetzt kommen die lustigen Tage




back

exit

>>

next

next

A click on  immediately calls up the next [title](#).  
So you can put together complete programs in the PRESETs and retrieve as needed.

exit

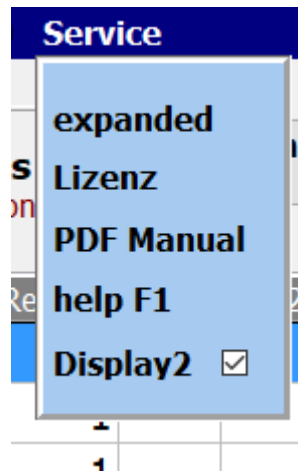
Via , the PRESET can be ended at any time.  
With back the previous [title](#) is called.

If you do not want to start a PRESET with the first [title](#),  
select the edit mode of the corresponding PRESET  
and double-click on the desired start [title](#).  
The PRESET will now be played from the start [title](#).

## PRESET copy

To copy a **preset**, drag the **preset** to the new **preset** while holding down the left mouse button.  
Then the complete content and the name of the **preset** will be copied.

All basic settings are made in the **SERVICE-> expanded**.  
 This affects the MIDI settings, the display and the GEMA settings.  
 Likewise, a complete backup can be made  
 and there is the possibility of a remote maintenance by TeamViewer.



Settings

### MIDI - settings

<u>Instrument</u>	<u>MIDI-channel</u>	<u>MIDI-IN device</u>
Roland Integra	16	UM-ONE

### display mode

☐ single page  
☒ double page  
☐ invert  
☒ Videoautomatic

Button L / R

**program backup**

service@alpha-medialine.de  
**Online Support**  
 - click -

Programmupdate

close

The basic MIDI settings for keyboard control are in the Program part **SERVICE expanded** made.

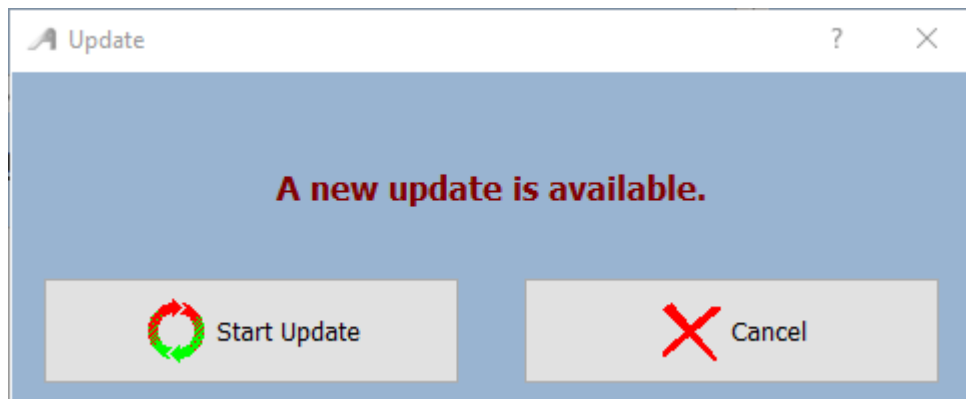
### MIDI - Einstellungen

<u>Instrument</u>	<u>MIDI-Kanal</u>	<u>MIDI-IN device</u>
ab Böhm Diamant 280	16 ▾	UM-ONE ▾

MIDI channel is the MIDI channel set on the keyboard.  
In our example, this is channel 16.

The USB-MIDI driver used is the USB to MDI adapter used.  
In this case, it's a Roland UM-ONE.

With a click on **program update** in the **expanded area** is checked automatically whether a new program version is available for download on the Internet.



The new version of the program can then be downloaded from the Internet by clicking **Start Update**. The prerequisite is, of course, that the PC is connected to the Internet.

**equipment**

**footswitch**

**footswitch**

**Bluetooth**

**USB**

## PageFlip Dragon

bluetooth

## PageFlip Firefly



This foot switch - PageFlip Dragon - can be connected via Bluetooth as well as via USB. It is freely programmable via Bluetooth. If the footswitch is to be used only for turning pages, So the type - PageFlip Firefly - which can also be connected via Bluetooth is sufficient. The footswitches are also preprogrammed for AKcontrol and offered with the software.

With the PageFlip Dragon it is e.g. possible:

**Select title**  
**Call up titles**  
**to turn the page**  
**play different Tusch's**  
**etc.**

If you have further questions, contact the manufacturer of **ATMObYTE Böhm classic** ([info@alpha-medialine.de](mailto:info@alpha-medialine.de)).

## USB



Function in the program part Notes:

Left foot key: Title list scroll backward

Right foot key: Title list scroll forward

Middle foot key: Call up titles

Function for note display:

Left foot key: to scroll backwards to the previous track or notes

Right foot key: scroll forward through the next track or notes

Middle footswitch: start sound or next track

Thus, the software is also very suitable for musicians who do not use a keyboard but want to access a large pool of notes in the computer, e.g. Accordion player or sax player etc.

If the footswitch is only needed to turn the notes, a 2-button footswitch is also available. The foot switches are preprogrammed for **ATMObYTE Integra-edition** and offered with the software.

***AKcontrol can run on all Windows systems as of Win XP, even under Win 10.***

***On MAC systems AKcontrol also runs, but VMware Fusion must be installed beforehand.***

***There is no special power required from the PC.***

***The standard computers offered today meet the requirements of the software.***

***ALL IN ONE PC's are best suited with a touch screen.***

***You only have one device.***

***These PCs are available in different sizes.***

***For a fixed installation on your home keyboard, this can be a bit bigger screen, about 23 ".***

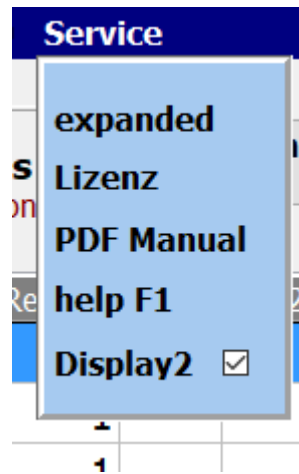
***On the go, a tablet, netbook, transbook or notebook of about 13 "is enough.***



To use the internal help documentation), there are 2 possibilities.

The first option is to press the **F1 key** on the keyboard.

The second possibility is the call via **Service-> Help** in the menu bar.



*How can I simulate the right mouse button with a finger on a touch display?*

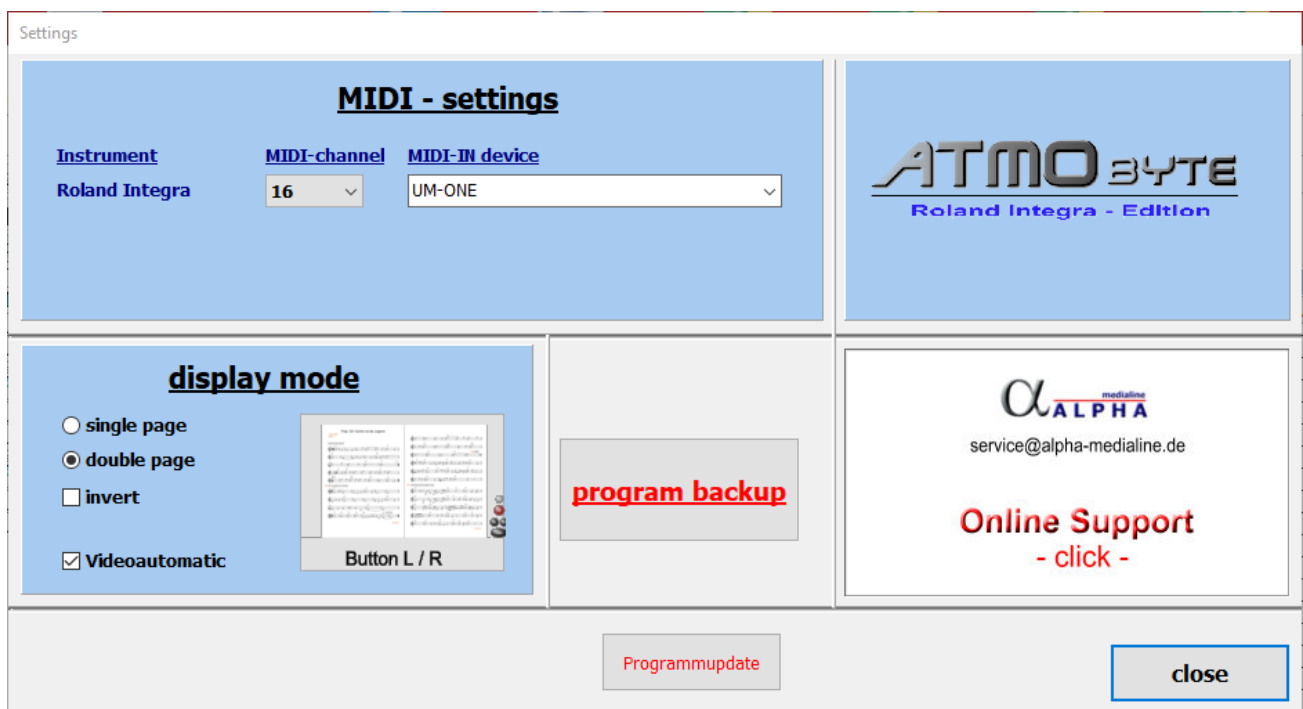
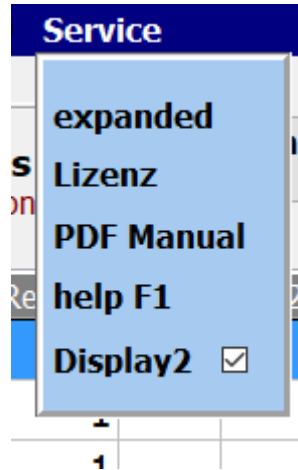
Very easily.

Leave your finger on the desired position of the display (about 1 second), until a mark becomes visible around the finger (Win7 a square, Win8 and Win10 a circle).

This basically applies under Windows and not only for **ATMObyte Integra-Edition**.

## remote maintenance

In the area **SERVICE-> expanded** can with a  
Click on remote maintenance to connect to the internet.  
It then starts the remote maintenance program TEAMVIEWER.  
This allows direct help via the Internet.



### Enter comments in sheet music

The existing PDF notes in ATMObyte can easily be supplemented with additional comments, etc.

Select the title, but do not call the notes yet and press **F10** on the PC keyboard.

Now the PDF file with the notes is opened with the PDF program,  
which is set as the default program under Windows.

In general, this is e.g. the free **Acrobat Reader**.

More recommendable is the free program **FOXIT READER**.

Of course, any other PDF program can be used with the edit function.